



Climate Change Roadmap

Enabling Climate Action

Jeremy Schembri, Office of Climate Change and Energy Management

September 13, 2023



Region of Peel's Climate Change Commitment

Terms of Council Priority

Climate Change Statement of Commitment

Climate Emergency Declaration

Climate Change Master Plan

Corporate Strategic Priority

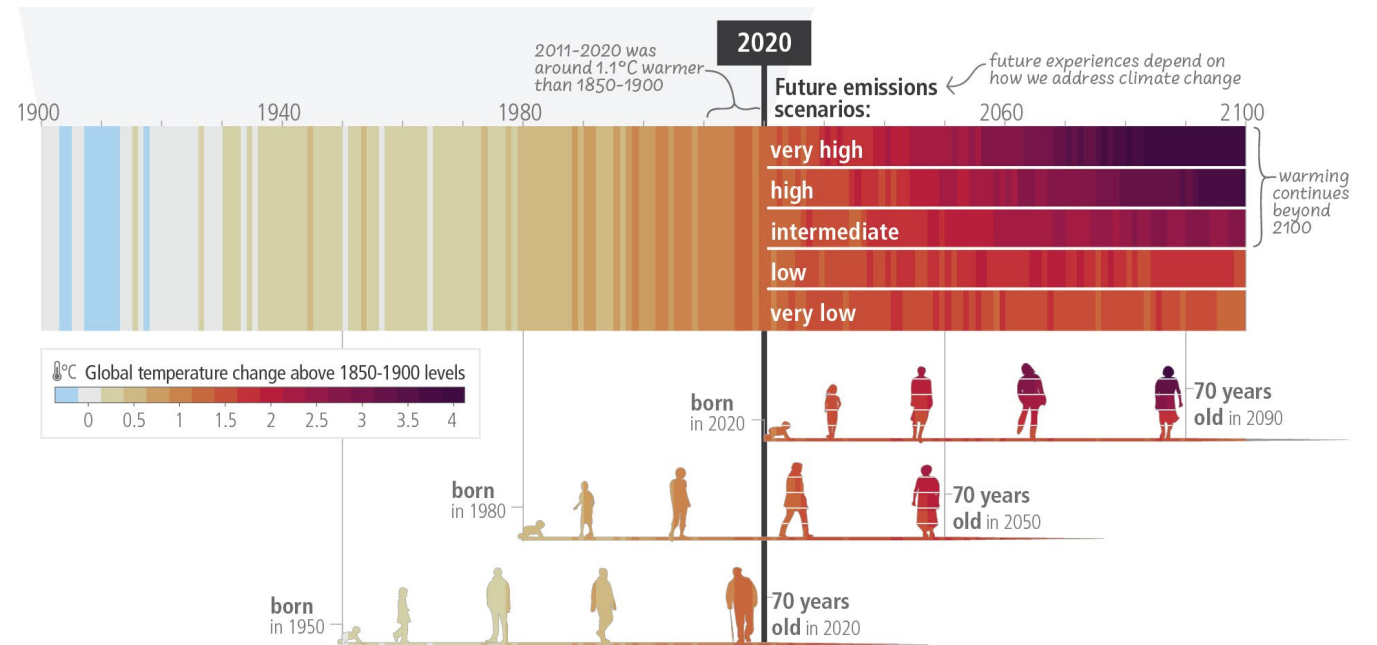


CLIMATE CHANGE
MASTER PLAN
LEAD INFLUENCE TRANSFORM

2020–2030

Reduce GHG Emissions

Target: Reduce greenhouse gas emissions by 45% below 2010 levels by 2030



Be Prepared

Target: 100% of infrastructure assessed against the projected impacts of climate change



Supporting Outcomes



BUILD CAPACITY



INVEST



MONITOR & REPORT

Change Management

ADKAR CHANGE MODEL



Awareness

Making employees aware of the need for the change and its benefits

Desire

Encouraging the desire in employees to participate in the change

Knowledge

Sharing knowledge on the mannerism of change

Ability

helping employees acquire the prerequisite skills and behaviors

Reinforcement

Anchoring the change in the organization



Roadmap Overview

Action

Level of Service
Review

Energy and
Emission
Management
Plan

Climate Change/
Infrastructure
Risk Assessment

Climate
Emergency
Response Plan

Climate Financing
Strategy

Impact

Integrating
climate change
into service
delivery

Establish
commitment and
responsibility for
actions and
emissions

Ensure assets can
maintain
continuity of
service

Ensure people
can maintain
continuity of
service

Map approach
for what and
how climate
action is funded



Engagement Plan

- Change centric
- Engagement tactics
- Engagement for purpose

Level of Service Review

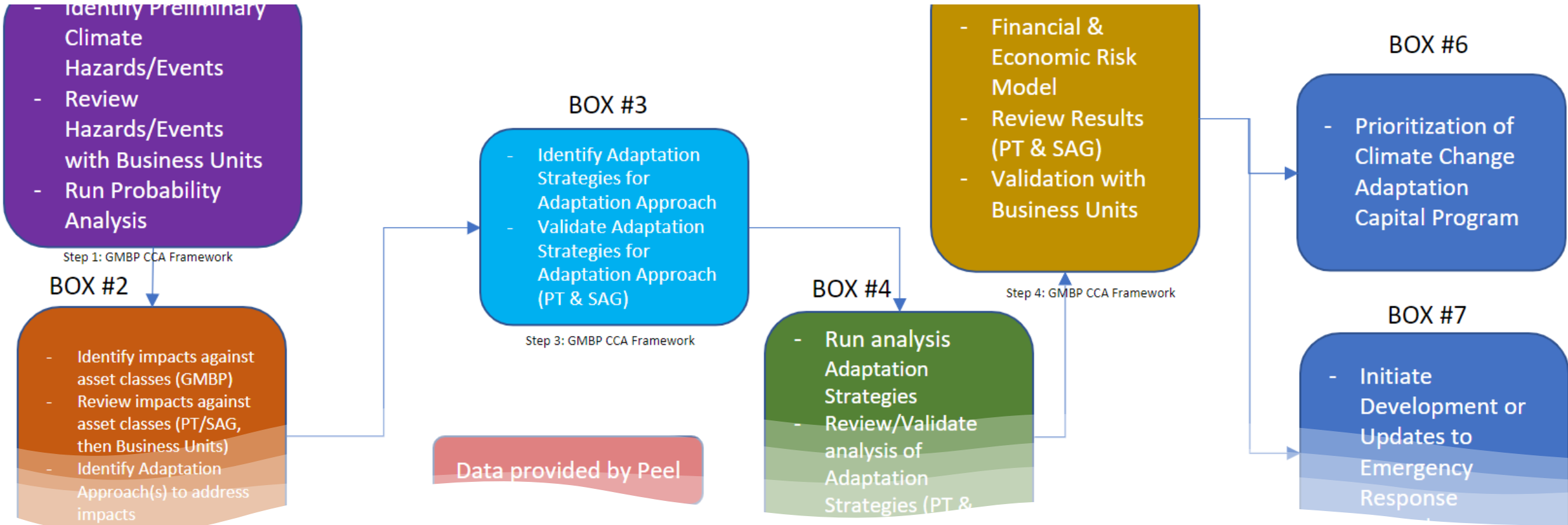
- Integration
- Alignment
- Ownership



Energy and Emissions Management Plan

- Improving clarity
 - Scope
 - Role and Responsibility
 - Schedule
 - Impact
 - Cost





Enterprise Climate Change Risk, Financial Planning and Infrastructure Adaptation Assessment

1. Impacts and risks to all Regional infrastructure posed by climate change hazards
2. Magnitude of cost associated with adapting critical, at-risk Regional infrastructure assets to be resilient to climate change

Climate Emergency Response Plan

- Hazards and Risk
- Vulnerabilities and Impacts
- Proactive and Reactive Planning
- Coordinating Response
 - Internal and External



Climate Change Financing Strategy

- Integrating climate change into budget deliberation
- Accounting for cost of actions and inactions
- Informing Long-term Capital Planning
- Mapping tools and tactics for financing



Questions

