



# Applying an Equity Lens to Active Transportation

Workshop #1 in a five-part series

Presenter:  
**Emiko Newman**





- CAP acknowledges that the stolen land on which we operate is the traditional territory of the Mississaugas of the Credit, the Anishinaabe, the Chippewa, the Haudenosaunee, and the Wendat peoples.
- At CAP, we recognize that many Indigenous Peoples are particularly vulnerable to climate change and will be disproportionately impacted by its effects.
- Through our work, we are committed to disrupting ongoing approaches to climate governance that reproduce settler-colonial relations and systematically exclude Indigenous Peoples from policy making.







- What is equity?
- Equity and Climate Synergies Resource Hub
- Applying an equity lens to Active Transportation
- Examples of successful actions
- Group discussion (breakout rooms)
- Next steps/upcoming opportunities



## **Equity:**

- Just and fair inclusion, where all individuals and communities have equal access to opportunities and resources to reach their full potential
- "An equitable region is one in which all can participate and prosper in their communities and where benefits and burdens are shared fairly" ([Florida Climate Assessment tool](#))

## **Equity-seeking/deserving groups:**

- Persons with disabilities, women, racialized groups, LGBTQ2S communities, low-income individuals, youth, seniors

## **Climate change vulnerability:**

- The degree to which individuals and places are at risk from climate change, and their ability to cope with those impacts
- Climate change disproportionately impacts equity-seeking populations



Applying an equity lens to climate actions means *considering the impacts of climate change on different communities and ensuring that the benefits of climate solutions are distributed fairly.*

## Win-win-win!

- Climate change mitigation efforts through an equity lens can have **numerous co-benefits** through:
  - Improved livelihoods for equity-deserving communities
  - Healthier, safer, and more accessible communities for all
  - Addressing historical oppression and advancing anti-racism and reconciliation
  - Building stronger public support for climate actions



- November 2022: CAP workshop on climate & equity synergies
- The hub supports municipal staff with applying an equity lens to climate actions



## Introduction

What is Equity?

Why Apply an Equity Lens?

Language for Framing Climate & Equity Synergies

**Climate & Indigenous Ways of Knowing & Being**

**Questions for Identifying Climate & Equity Synergies**



## Introduction

This resource hub is intended to support municipal staff with identifying equity and climate synergies in their climate action plans. If your municipality already has an existing plan, this hub can help strengthen it, and if you are still in the process of developing one, this is the perfect place to get started.



## 1. What are you trying to achieve with this action?

- Safe, reliable, accessible, and affordable transportation opportunities for equity-deserving groups
- Support for local equity-deserving businesses
- Enhanced social connection & wellbeing

## 2. Who has traditionally participated in/benefitted from this action?

- Predominantly white, middle-high income communities

## 3. What groups are most in need of this action?

- Marginalized/disadvantaged communities with poor transit and AT services
- Areas facing negative health impacts (e.g., from car-centric infrastructure)

## 4. What has prevented these groups from participating in the past?

- Lack of investment in AT infrastructure in their communities
- Lack of consultation in decision-making processes





## 5. What design can address barriers for those most in need?

- Community outreach and engagement
  - Multiple methods
  - Hire community members to engage with their own community
  - Disaggregate data

## 6. Can you identify any negative impacts that this action may cause?

- Risk of gentrification

## 7. Who hasn't yet been engaged that would be good to engage?

- Prioritize equity-seeking communities through continual consultation and engagement
  - Who's included? What consultation formats are being used?



**Code:** 45487273

# Applying an Equity Lens to AT: Important Reminders



**Who gets to exist safely  
on the streets ?**

**Do women, people with disabilities,  
under housed individuals, LGBTQ+ folks,  
and racialized communities feel safe on  
the streets?**

**On bikes?**

**On public  
transit?**



## **Example 1: [Slow streets program](#) (Oakland, CA)**

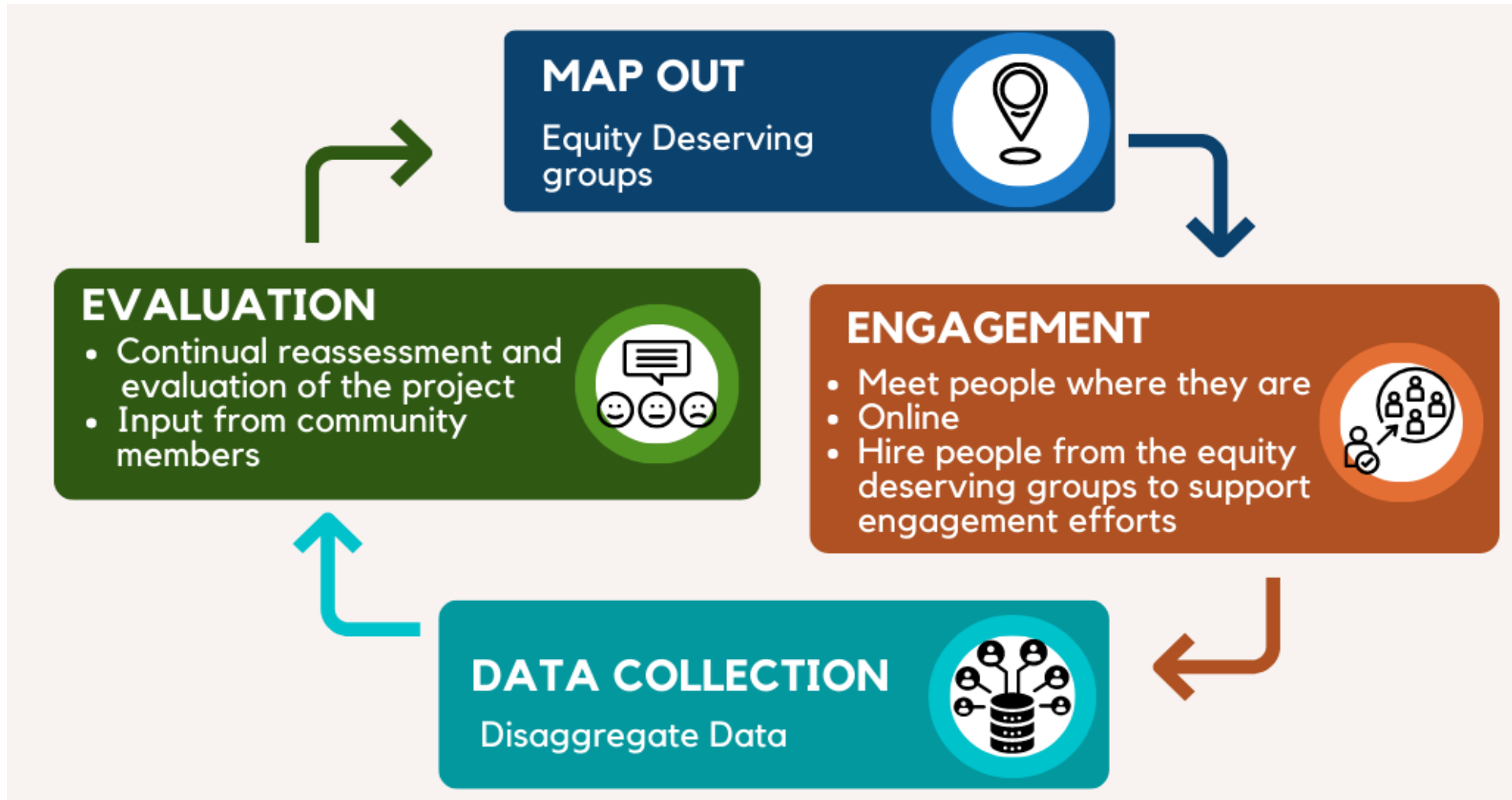
- Introduced slow streets during pandemic
- Engaged lower-income, racialized communities for feedback
- Improved it in second iteration

## **Example 2: Suburban cycling hubs (anywhere)**

- Municipalities have the power to build suburban cycling hubs
- Ex. [Peel Community Cycling Program](#), [Mississauga Cycles](#), [Caledon Bike Hub](#)

## **Example 3: [Transportation Equity Lens Tool](#) (Toronto)**

- Transportation Services developed this tool to help city staff identify the impacts of its initiatives on equity-deserving groups
- Uses Neighbourhood Improvement Areas (NIAs) to identify locations for targeted infrastructure investments





## Questions:

1. How could you capture/are you capturing equity and climate synergies related to Active Transportation in your municipality?
2. What limitations or barriers are you facing/can you foresee? How might they be overcome?





- **April 13:** Green Development Standards & Low-Carbon Energy Planning
- **June 8:** Growth Management & Land Use
- **September 21:** EV and E-Mobility Strategies
- **November 8:** Rental Retrofit Market & Renewables Installations Projects





[The Municipal Climate Decisions Event Calendar](#) provides a central platform to share info. about upcoming council and committee meetings from across municipalities in Ontario's GTHA.

The calendar highlights meetings focused on:

- climate change and sustainability,
- land use,
- Transportation and active transportation,
- infrastructure and environment

**Aim** - to increase community awareness and accessibility, encourage attendance, and lower barriers to staying informed about municipal decisions.



Thank you!

