



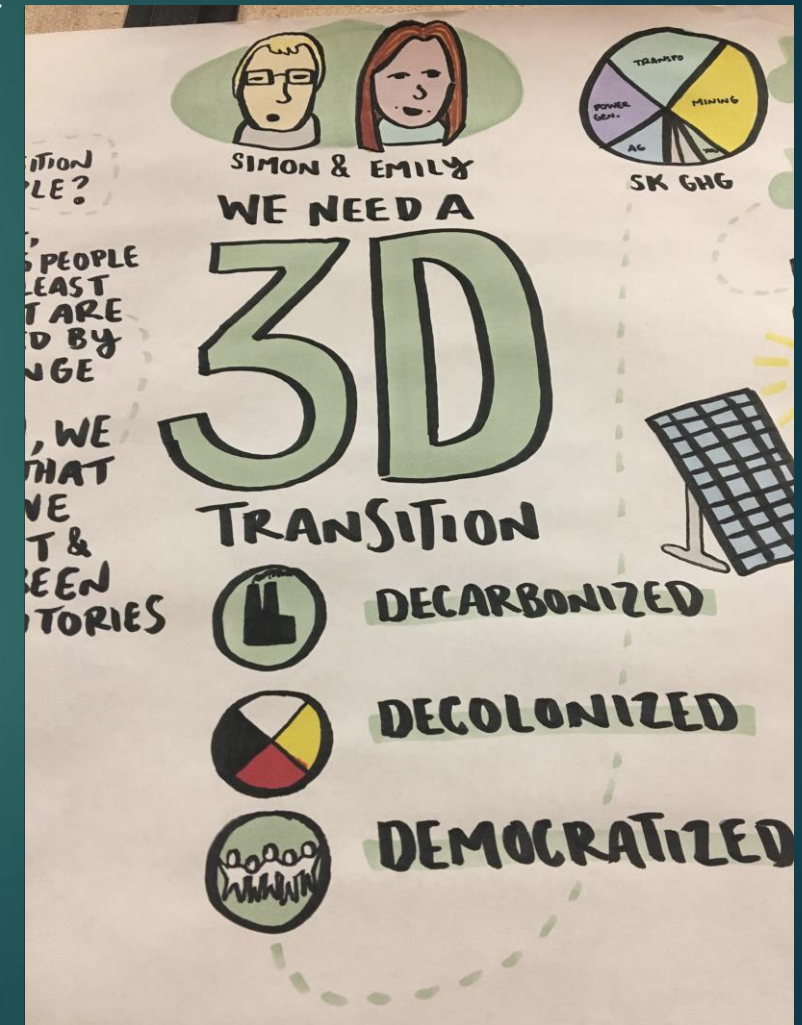
Municipal renewable energy transitions: An equity lens

EMILY EATON, PH.D

EMILY.EATON@UREGINA.CA

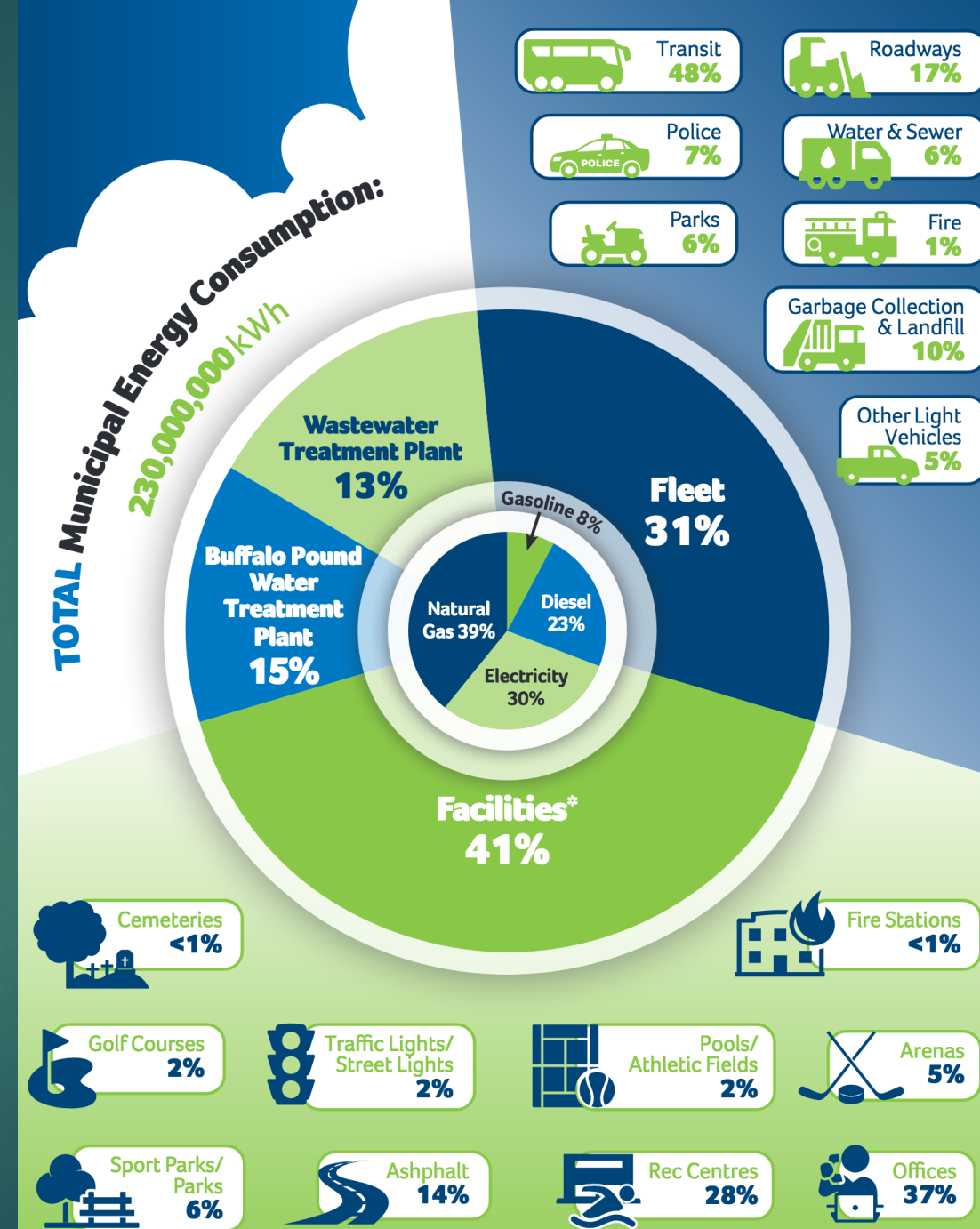
Climate Change Policy as Economic and Social Justice

- ▶ Make marginalized and working class people's lives better
 - ▶ redistribute and de-commodify key services and infrastructure (Huber, 2018)
 - ▶ Tax the rich
 - ▶ Repatriate land and jurisdiction (Estes, 2019)



100% Renewable Regina by 2050

- ▶ Motion passed unanimously on October 29, 2018
 - ▶ BIRT: the City of Regina join the growing number of municipalities from around the world and commit to being a 100% renewable city by 2050



*does not include Evraz Place and Mosaic Stadium

Focus Groups

- ▶ 4 groups with 29 representatives from 27 community orgs
 - ▶ Q: What are the energy needs of your orgs and the people you support?
 - ▶ Q: How could energy transition (and investments made by the City) impact your orgs and the people you serve?
- ▶ 1 group with 12 representatives from organized labour (private and public sectors)
 - ▶ How could union members be affected by transition?
 - ▶ What kinds of conversations are unions having with their members about transition?

Public Transit

- ▶ Youth, seniors, people living in poverty, newcomers walk and bike long distances in all weather. They use the bus when they can afford it.
- ▶ Much appetite for **fare-free public transit**
 - ▶ Kansas City: 1st major US city to adopt
 - ▶ City of Victoria: free transit passes to youth
- ▶ Expanded routes, bus-only lanes, increased frequency are all key to accessibility



Safety and Accessibility

- ▶ LGBTQ2+ people, women living in shelters, newcomers, people with disabilities, marginalized and racialized people do not feel safe on public transit, on bikes, walking etc.
- ▶ Portland: “Instead of asking how do we get more people on the bus?” we should instead be asking “Who can’t ride the bus safely, and why?”
- ▶ Investments needed in cycling and walking infrastructure, (traffic) lighting, snow removal, etc.

Unmet Energy Needs

- ▶ Tenants are living in landlord-owned housing that is not meeting their energy needs
 - ▶ Need for energy efficiency regulations/performance standards for rental properties
 - ▶ Need for strong tenant rights to adequate temp., security of tenure, etc.
- ▶ Social assistance rates are not keeping up with increasing energy costs in SK
- ▶ Transform the model of SaskPower from profit-making crown corp. to public service
- ▶ Explore community energy sharing programs

Recommendations

- ▶ **Equity committee on sustainability**
 - ▶ Composed of people with the lived experience of various forms of marginalization as well as organizations that support these people.
- ▶ **Just transition committee**
 - ▶ Composed of workers and their representatives from a wide variety of unionized and non-unionized sectors.




Renewable Regina Putting Equity into Action

FALL 2020



Acknowledgements

- ▶ This research is part of the Corporate Mapping Project
 - ▶ a research and public engagement initiative investigating the power of the fossil fuel industry.
 - ▶ The CMP is jointly led by the University of Victoria, Canadian Centre for Policy Alternatives and the Parkland Institute. Supported by SSHRC
- ▶ Research Partners: Simon Enoch, Canadian Centre for Policy Alternatives + Shanon Zachidniak, EnviroCollective
- ▶ Additional financial contributions from: David Suzuki Foundation + URegina Community Research Unit
- ▶ **Report at: tinyurl.com/renewable-regina**



Municipal renewable energy transitions: An equity lens

EMILY EATON, PH.D

EMILY.EATON@UREGINA.CA