



**Nottingham**  
**City Council**



Carbon Neutral Nottingham 2028



**Leading the response to Climate Change**  
**Chris Common**  
**Nottingham City Council, Carbon Neutral Policy Manager**

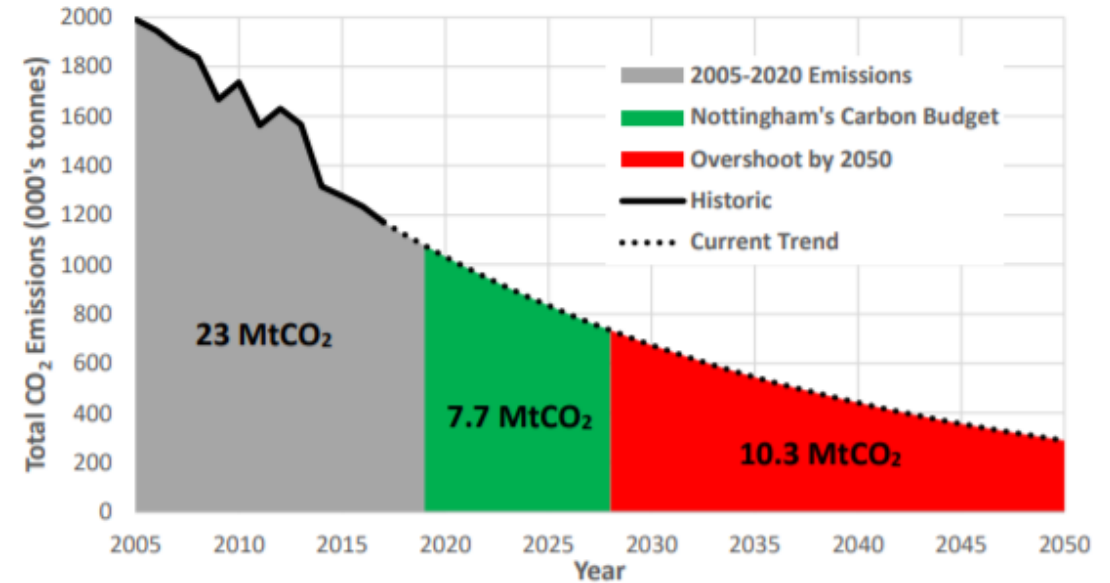
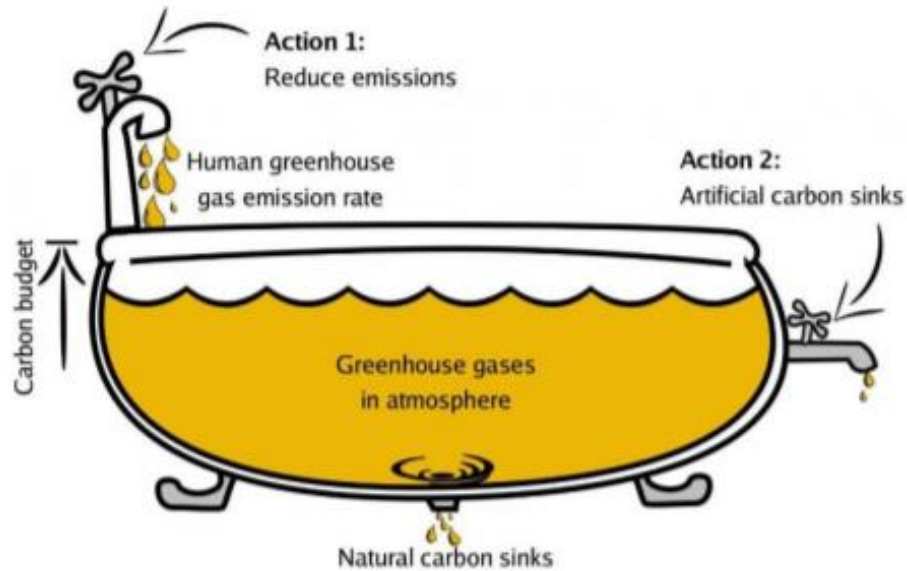


# Nottingham - *City of Rebels*



- Unitary Council formed in 1998
- 332,900 population, 43,500 students
- 6<sup>th</sup> largest UK 'Core City'
- 26<sup>th</sup> largest council in England (out of 314)
- 7,900 staff
- Net Budget = £350m p.a.

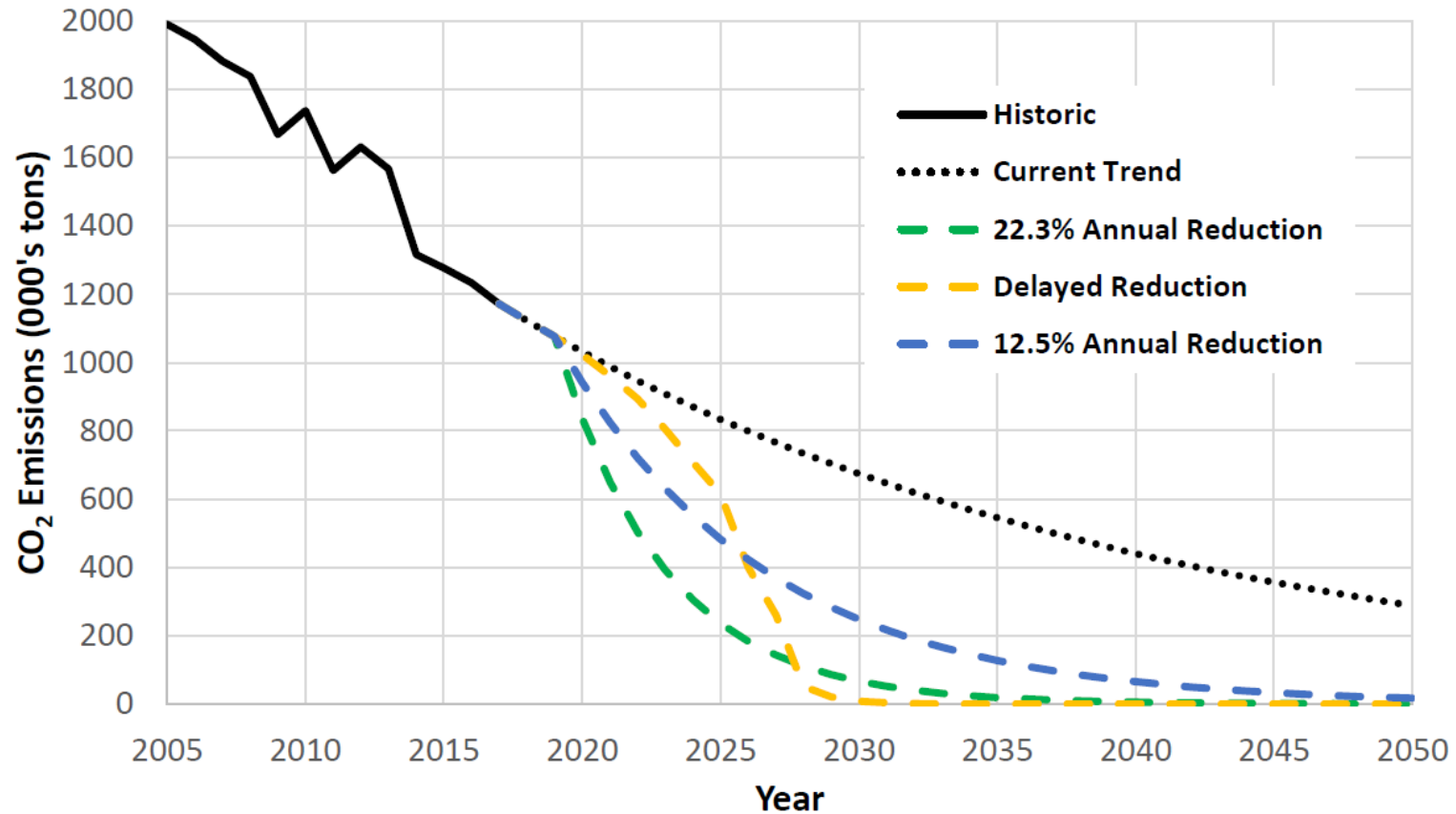
# Nottingham's Carbon Budget



**Nottingham's Carbon Budget = 7.7 million tonnes of carbon dioxide (MtCO<sub>2</sub>) for the period 2020 to 2100**

*If Nottingham were to continue as it has done so over the last 12 years, with an annual emissions reduction trend of 4.16%, this budget would be completely exhausted during 2028.*

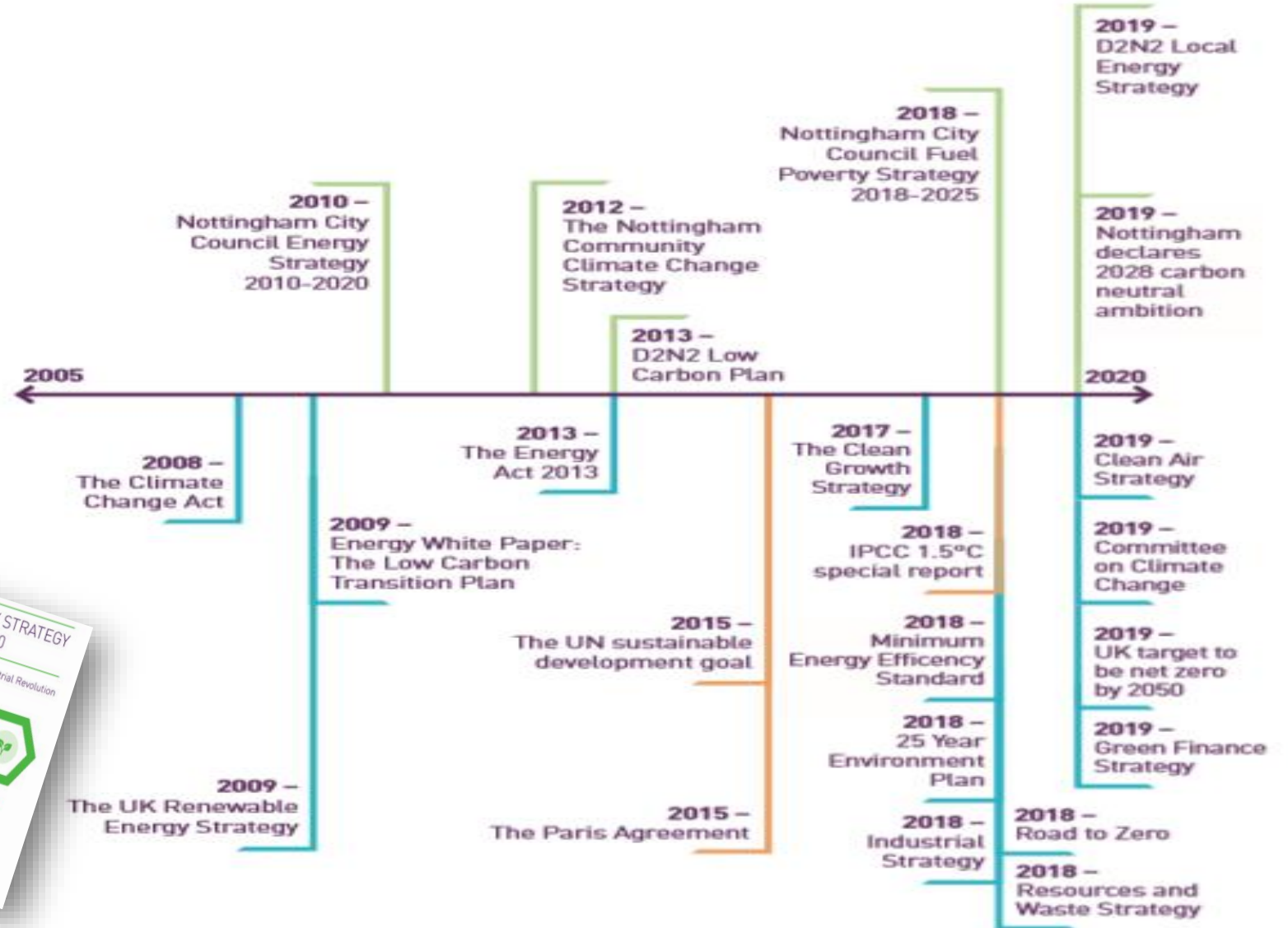
# Nottingham's CO<sub>2</sub> emissions pathway



# Policy and Strategy

## KEY

- Regional and local policies
- National policies
- International policies





# Nottingham's Response to Climate Change

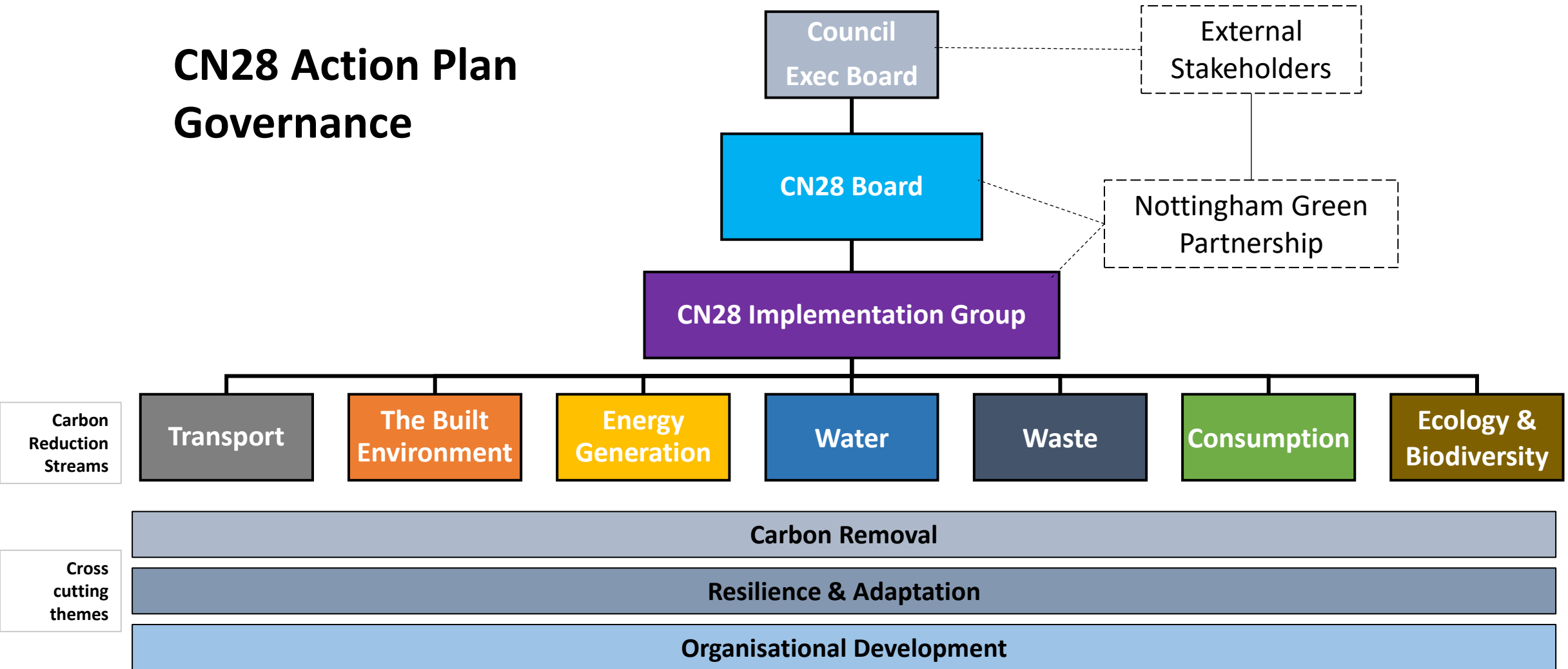
- **March 2019** - **Carbon Neutral 2028 Charter** partnership agreement to achieve net zero by 2028 and tackle climate change across the city e.g. Universities, NHS
- **May 2019** – Carbon Neutral 2028 key part of new **Council Plan**
- **January 2020** - **Climate and Ecological Emergency declared** – Draft action plan consultation begins
- **July 2020** - **Carbon Neutral Nottingham 2028 Action Plan** delivery began
- **July 2021** – reinforced in revised (recovery) **Council Plan**



# Carbon Neutral Action Plan 2020-2028

1. Carbon Reduction	Transport	Reduce commuting, increase active travel, ULEVs, clean freight
	Built Environment	Use of renewable energy, building efficiencies, sustainable procurement
	Energy Generation	Local low carbon energy supply, affordable energy
	Waste	Reduce waste, recycle, reuse, energy production
	Water	Improve water supply efficiency and demand
	Consumption	Increase local low carbon food production, reduce consumption of high carbon products, reduce food waste
2. Carbon Removal		Offset emissions e.g. tree planting, improve land management
3. Ecology & Biodiversity		Improve habitats, increase woodland, natural features in new developments, city bee friendly
4. Resilience & Adaptation		Reduce flood risk, services adaptable to climate change, understand impacts of extreme weather on vulnerable citizens
5. Organisational Development		Engagement (external and internal), funding, governance, monitoring, 'carbon neutral by design'

# CN28 Action Plan Governance





# The story so far....

- City emissions **reduced by 43% since 2005**, highest per capita in the UK
- 46% of residents are on a **'green' domestic electricity** tariff, most of any UK city
- Nottingham's **air quality is ranked the best in the country**, and Nottingham considered UK's 23<sup>rd</sup> greenest town and city overall
- 30% of **Council fleet** is now ULEV, first in world to use e-RCVs
- 59m journeys on **bus and light rail** (19/20), highest outside of London
- 18.7m **tram** passenger journeys, 3<sup>rd</sup> highest outside London
- **Broadmarsh car park** - largest number of electric vehicle charge points (81) in one location in the UK, 720 solar panels on the roof
- 43% of **NCT fleet bio-gas buses**, plans for all fleet to be CN by 2028
- **Council housing 'retrofit'** programme, over 4,000 now with solar panels
- **ULEV Taxis** - 46% Hackney, 69% private hire



# Some Challenges...

- **Funding & Resourcing**

- Pressure to deliver other key Council services
- External – private sector, grants etc
- Staff numbers & skills

- **COVID**

- Short term impact
- Long term effect on transport choices
- Increase in working from home

- **Attitudes and behaviours**

- Internal and external
- Culture shift
- Public expectation/pressure groups

- **Government policies**

- Impact of new government directions and policies e.g. Environment Bill, Planning, Energy, Transport







Nottingham  
City Council



Carbon Neutral Nottingham 2028



**Chris Common**  
Carbon Neutral Policy Manager  
(+44) 0115 8763435  
[chris.common@nottinghamcity.gov.uk](mailto:chris.common@nottinghamcity.gov.uk)