

Region of Peel

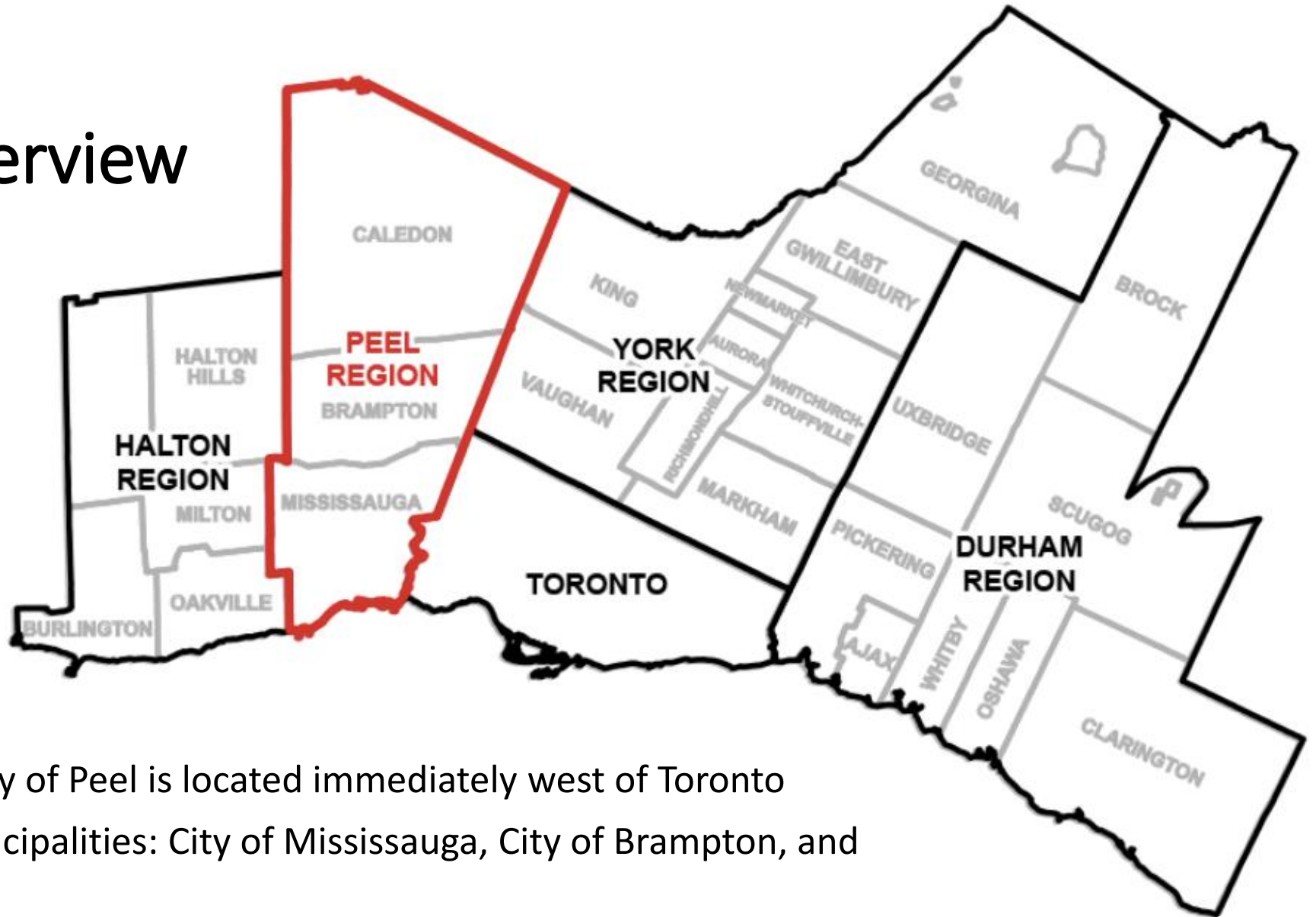
A Regional Approach to Integrating Climate Change in the Official Plan and Growth Management

Derek Lau, MES, RPP, MCIP
Intermediate Planner

Clean Air Partnership
February 24, 2021

Background

Context and Overview



- The Regional Municipality of Peel is located immediately west of Toronto
- Comprised of three municipalities: City of Mississauga, City of Brampton, and the Town of Caledon
- Population of approximately 1.4 million people

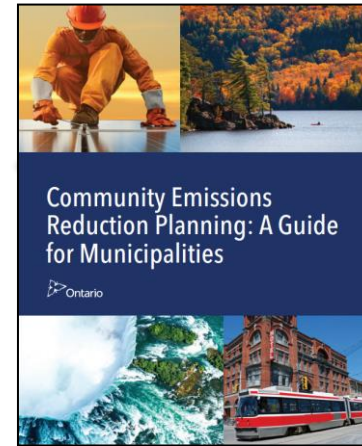
Policy Context

Provincial Land Use Planning Actions and Policies



Planning Act, 1990 (amended)

- Incorporation of climate change policies in official plans through Bill's 68 and 139



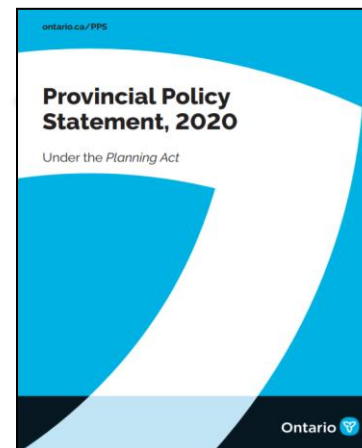
Community Emissions Reduction Planning Guidance, 2018

- Support land-use planning direction related to the completion of energy and GHG emissions plans



A Place to Grow, 2019

- Section 4.2.9 and section 4.2.10 regarding climate change

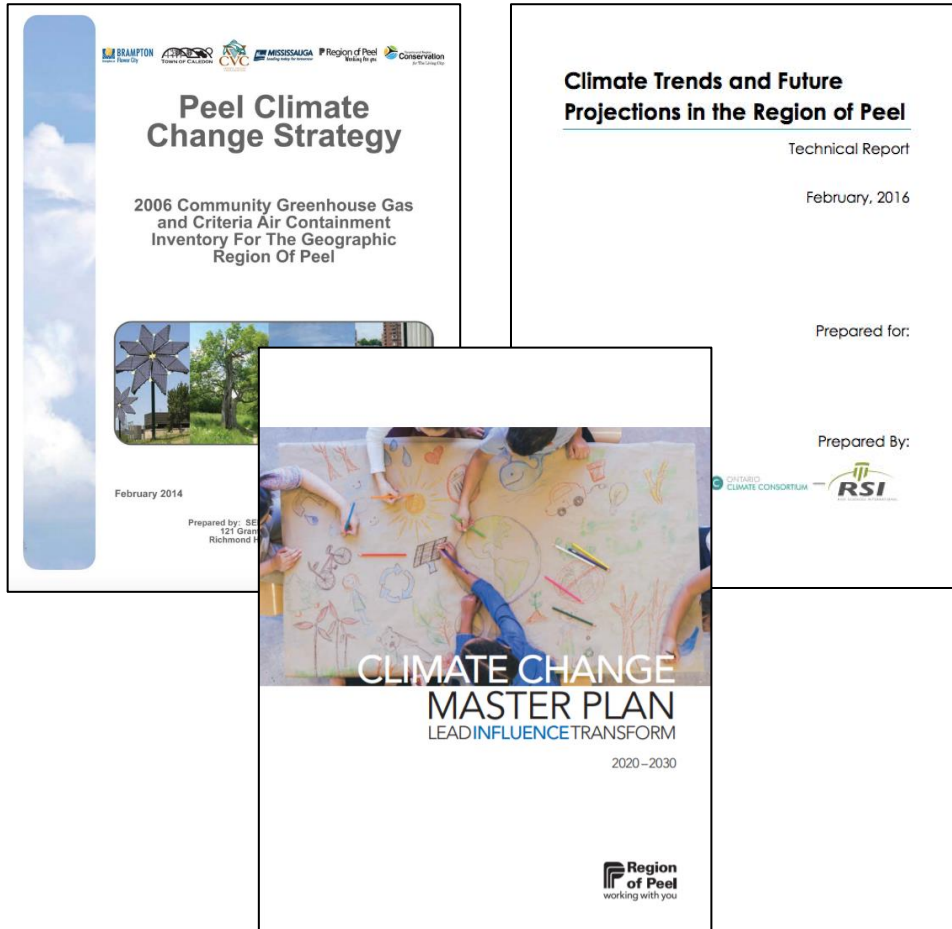


Provincial Policy Statement, 2020

- Updated climate change language (originally from PPS, 2014) in specific theme areas

Policy Context

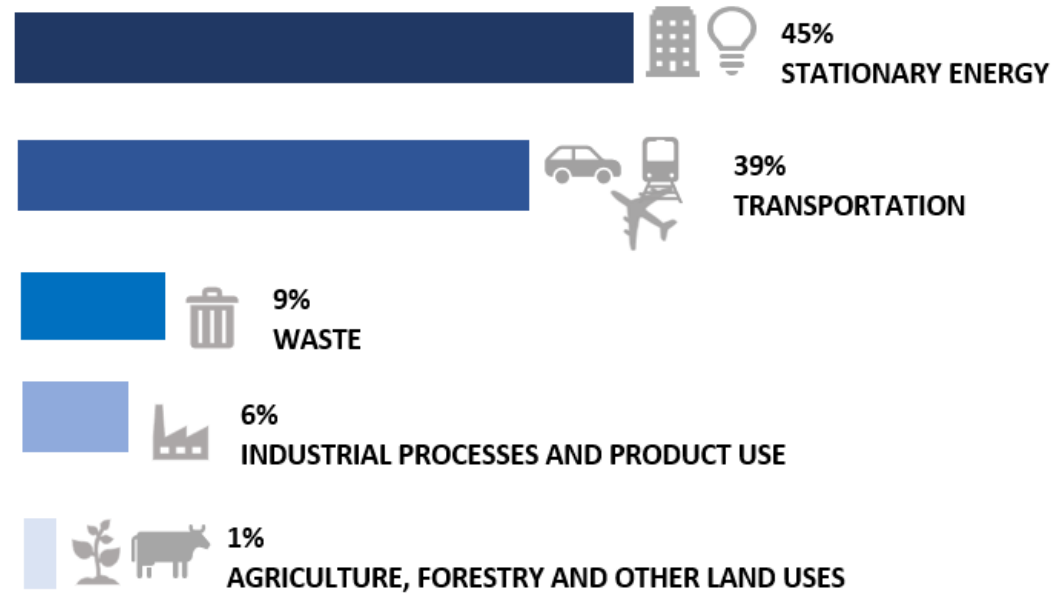
Climate Change in the Region of Peel



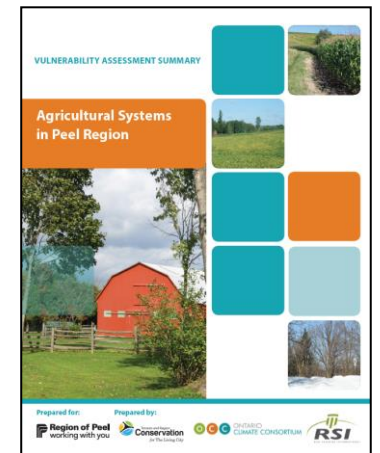
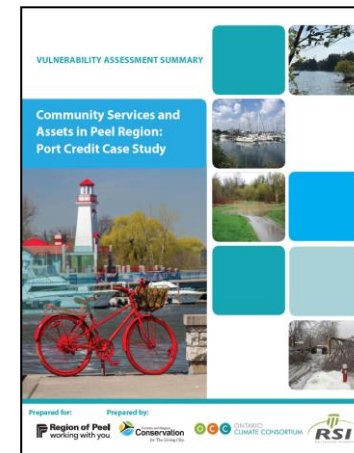
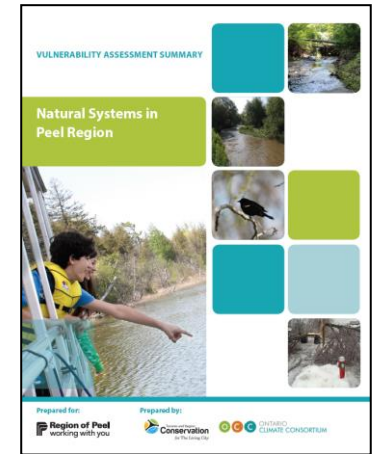
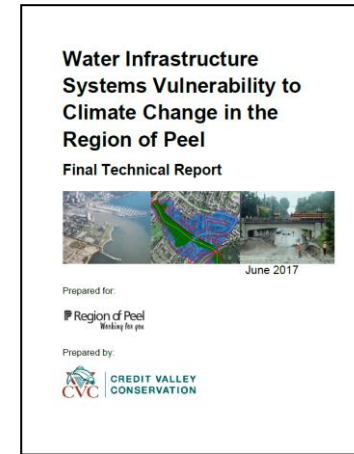
Policy Context

Climate Change in the Region of Peel

2016 Peel GHG Emissions by Sector



TOTAL GREENHOUSE GAS EMISSIONS: 10.1 MILLION TONNES CO₂ EQUIVALENT



Peel2041+ Official Plan Review & Municipal Comprehensive Review

The **13** focus areas comprehensively make up the Region's Official Plan Review and MCR.





Climate Change

Regional Official Plan Framework

Climate Change policies are being integrated throughout the Regional Official Plan in key theme areas:



Climate Change



Growth Management



Transportation



Housing



**Settlement Area
Boundary Expansion**



Greenlands System



Water Resources



**Agriculture &
Rural Systems**



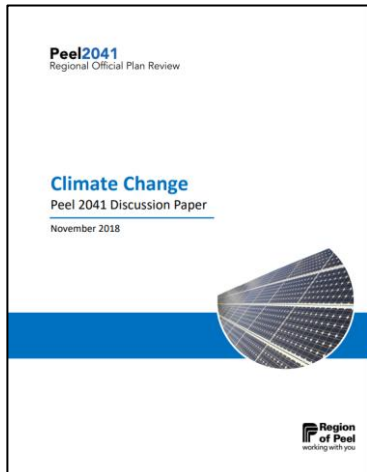
**Provincial
Greenbelt Plans**



Climate Change

Regional Official Plan Framework

New section added to Natural Environment Section to implement climate change:



2.2.3 Climate System

- preamble introduction to climate change and how Regional and local land use planning can help address impacts
- broad goals and objectives for climate change reflecting provincial policies
- policy direction for GHG emissions reduction and adaptation planning, including direction to requiring updated GHG inventories
- policy direction to undertake infrastructure risk and vulnerability assessments
- policy direction to support climate change planning through collaborative partnerships

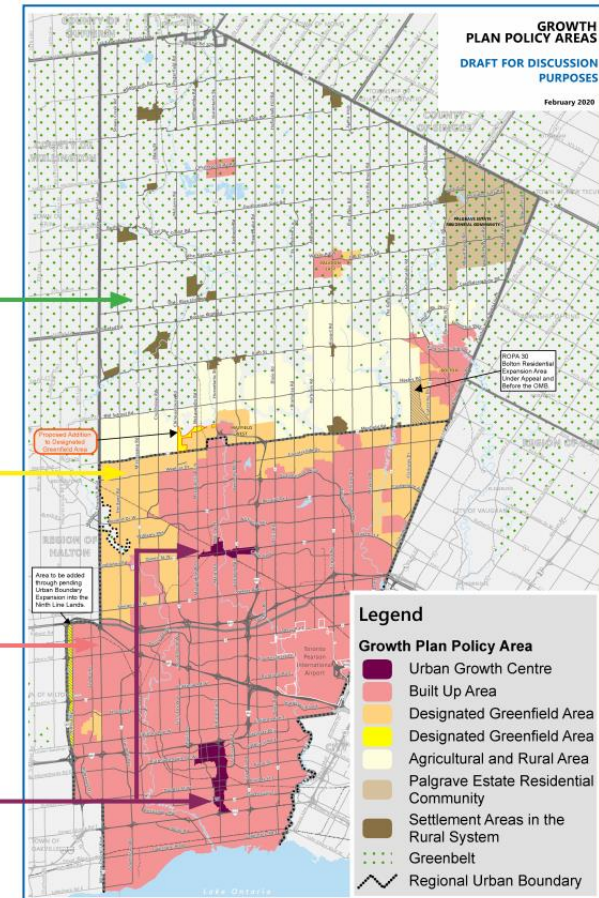


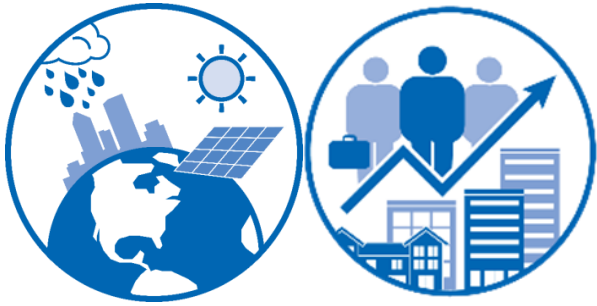
Climate Change + Growth Management

Anticipated Growth in the Region of Peel to 2051

A Place to Grow	Population	Employment
Previous Schedule 3 to 2041	1,970,000	970,000
New Schedule 3 to 2051	2,277,000	1,068,000
<i>Difference</i>	<i>307,000</i>	<i>98,000</i>

- Greenbelt**
Protected from major development
- Designated Greenfield Area**
Lands to accommodate current and future growth at 65 ppj/ha*
- Built-up Area**
A minimum of 55% of Peel's growth is planned through intensification in the built-up area
- Urban Growth Centres**
Planned to grow and achieve a density of 200 ppj/ha through high-density mixed-use development





Climate Change + Growth Management

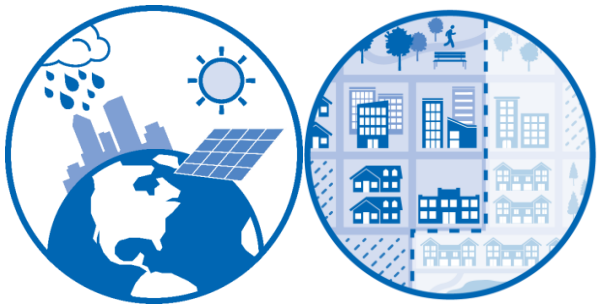
Climate Change Criteria to Evaluate Regional Growth Allocation Intensification and Greenfield Density Targets in Peel

Climate Change Mitigation: Reduce Greenhouse Gas Emissions

- Compact Built Form
- Sustainable Transportation System
- Renewable and Alternative Energy Systems
- Protection of Agricultural Land / Soils

Climate Change Adaptation: Building Resilient Communities

- Compact Built Form / Protection of Natural Environment / Watershed Health
- Human Health and the Built Environment



Climate Change + Settlement Area Boundary Expansion



Settlement Area Boundary Expansion



Growth Management, Built Environment

- Commercial and Employment Opportunities
- Health Assessment
- Public Facilities



Infrastructure, Finance

- Water and Wastewater
- Transportation
- Fiscal Impact Assessment



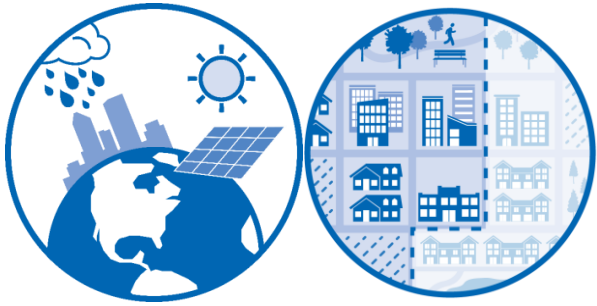
Environment, Climate Change, Agriculture

- Scoped Subwatershed Study
- Climate Change
- Agricultural Impact Assessment

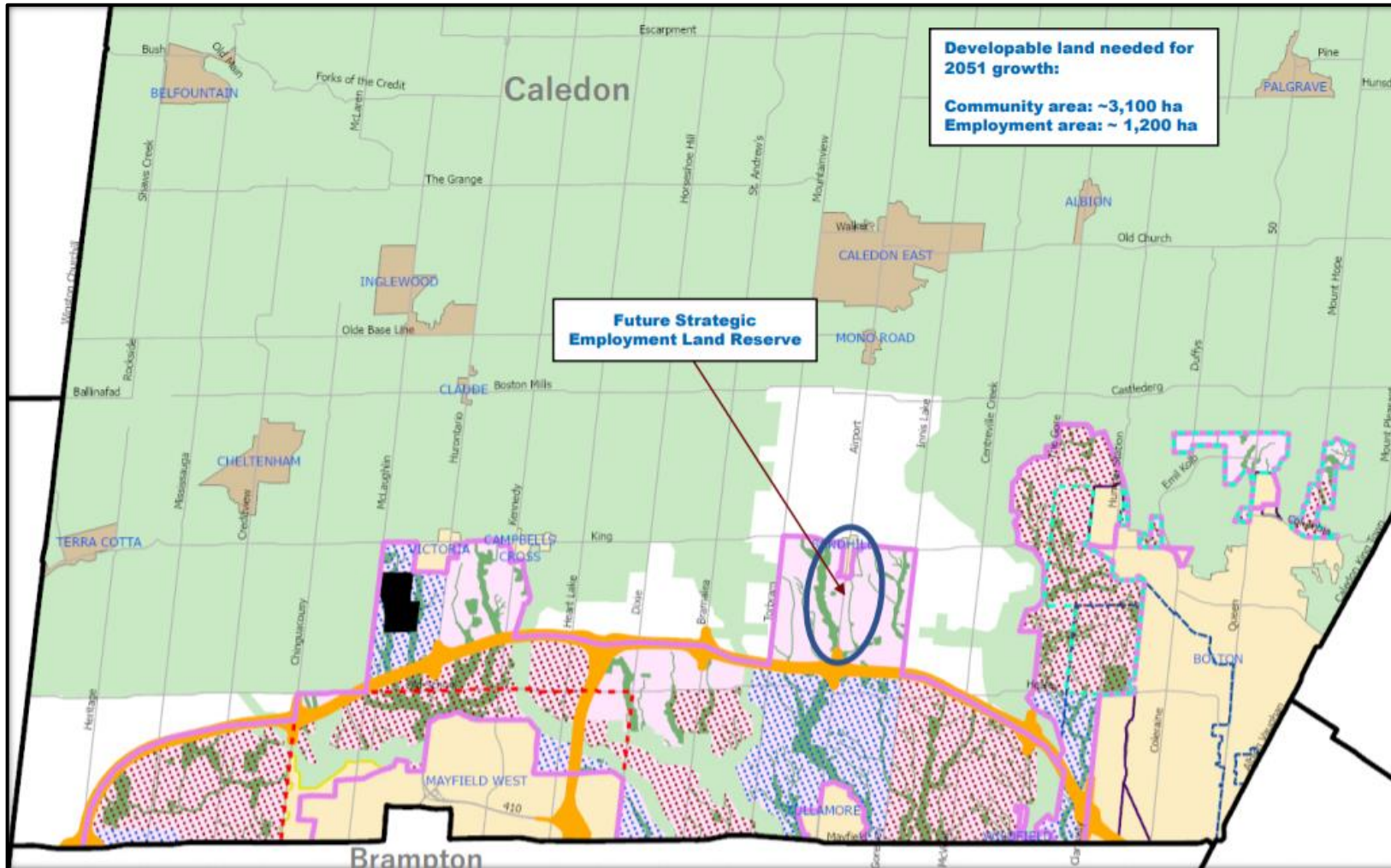


Resources

- Mineral Aggregate
- Cultural Heritage
- Stage 1 Archeological Impact Assessment



Climate Change + Settlement Area Boundary Expansion



Developable land needed for 2051 growth:
Community area: ~3,100 ha
Employment area: ~1,200 ha

Future Strategic Employment Land Reserve

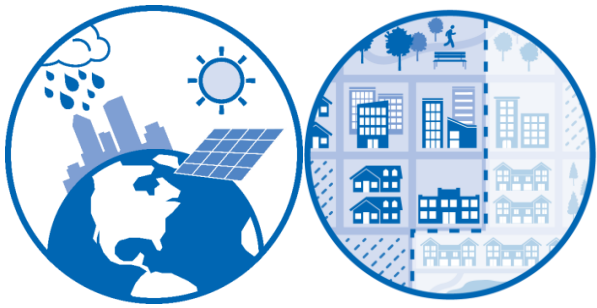


Disclaimer:

Mapping is **DRAFT** only for further study and discussion

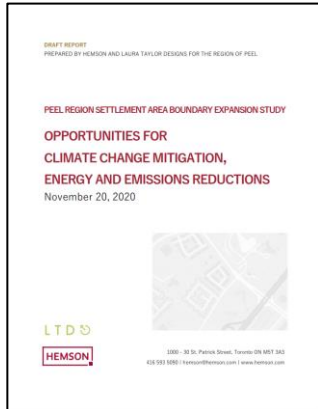
This map represents a conceptual area for the Settlement Area Boundary Expansion and is being provided for information purposes only. Users are advised that this mapping is currently in draft and may change. The Region of Peel does not certify the accuracy of the information provided nor does it provide any assurance that the mapping will remain unchanged. Any reliance placed by the user on the information provided herein is strictly at the risk of the user, and the Region of Peel does not assume responsibility for any loss or damages resulting to the user or any third party by reliance on this information.

For additional information, please refer to the *Settlement Area Boundary Expansion Study Phase A: Focus Study Area* report.



Climate Change + Settlement Area Boundary Expansion

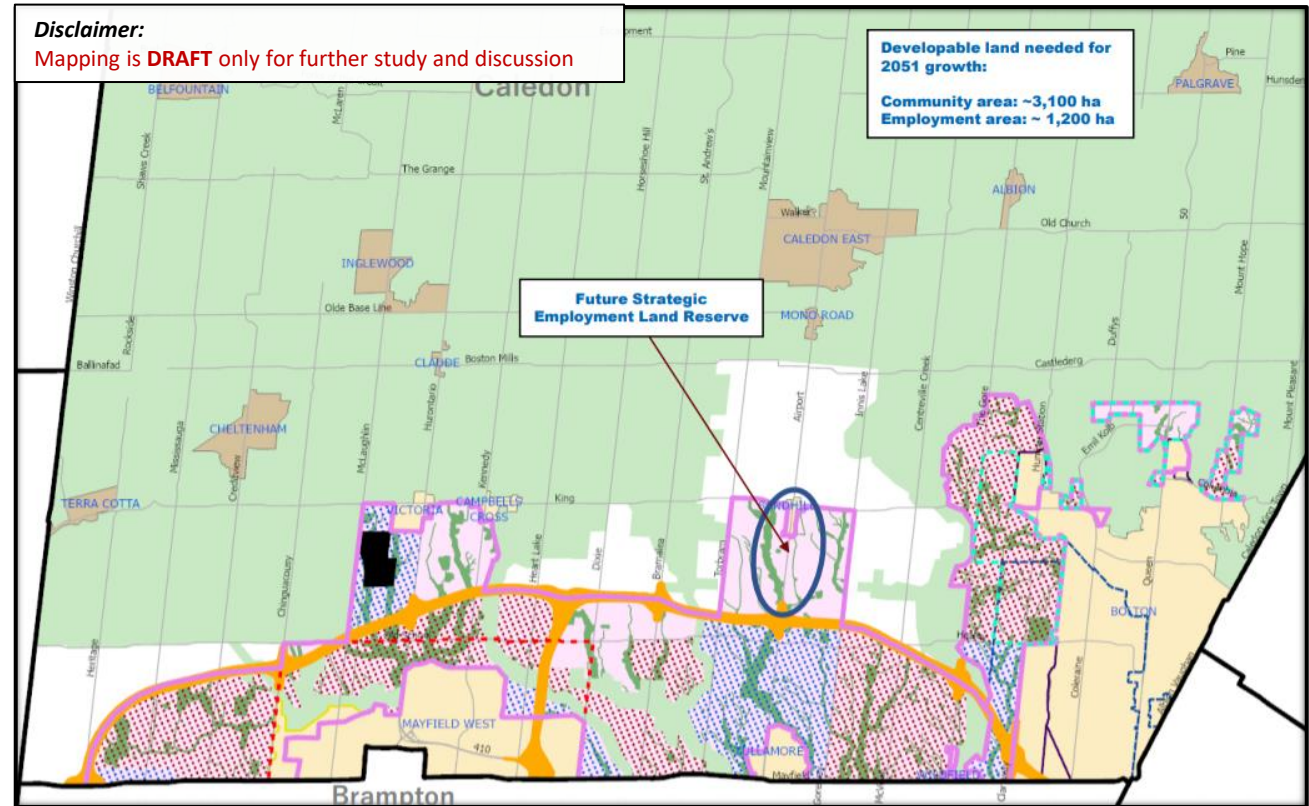
Climate change component considerations as part of the SABE process



Climate Change Mitigation, Energy and Emissions Reduction

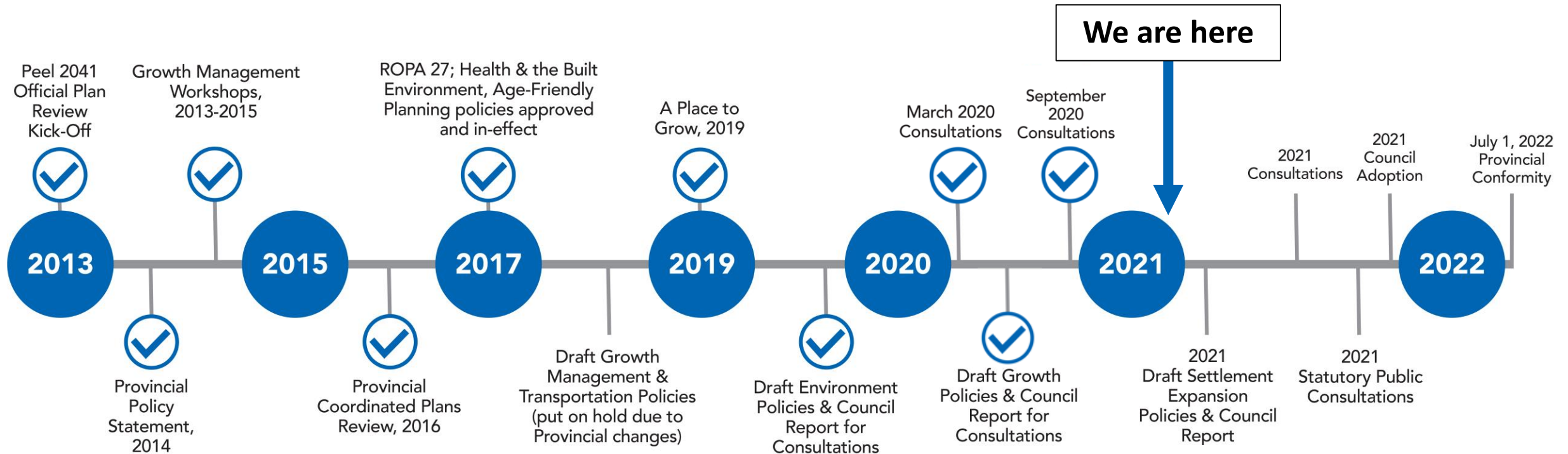


Transportation, Health Assessment, Agricultural Impact Assessment, Environmental Screening and Scoped Subwatershed Study



Next Steps

Region of Peel Official Plan Review and MCR



Note: Timeline subject to change

Questions?

Region of Peel

Regional Planning and Growth Management

For more information on **Peel2041+**, please visit
<https://www.peelregion.ca/officialplan/review/>

