

Clean Air Partnership

November 18, 2020

A Zero Emissions Buildings Exchange for the GTHA

Rob Bernhardt,
Advisor, Projects & Policy
Passive House Canada

Anna Milner
Manager, Government & Stakeholder Relations
Passive House Canada

Zero Emissions Buildings Exchange in the GTHA

- What is required of buildings?
- What is a ZEB exchange?
- How can an exchange support local government?
- Feedback & questions



Parkdale Landing, Hamilton, ON

What is required?



What is Required?

- IPCC Assessment Reports & Pathways to 1.5°C global warming
- Paris Accord
- UN Framework Guidelines
- Pan-Canadian Framework; Build Smart. Clean BC, Toronto Green Standard, Vancouver Building Bylaw
- All based on climate science



Clayton Community Centre Surrey, BC



The Four Imperatives

- Maximize operating energy efficiency
- Meet operating energy requirements from renewable sources
- Minimize embodied carbon
- Achieve the first three things as rapidly as possible



University of Toronto student residence,
Under construction



1059-1075 Nelson St.

What is a ZEB Exchange?

- Capacity development
- Industry engagement
- Technical support
- Barrier removal
- Consumer outreach



Alberni St., Vancouver

Concept Development Process

Funded by TAF

Input & guidance from key partners:

- Passive House Canada
- City of Toronto
- Toronto Community Housing
- Waterfront Toronto
- Clean Air Partnership
- CaGBC, Toronto Chapter
- Dunsky Energy

Stakeholder engagement:

- Over 30 companies, industry associations, affordably housing agencies, educational institutions, local governments, Hydro One, TRCA-BRE Innovation Park



North Park Passive House
6-unit condominium
Victoria, BC

Challenges an Exchange should address

- Financial – understanding, managing & calculating costs
- Procurement
- Design, construction & operational skills
- Regulatory alignment & support
- Public/tenant/owner engagement



The Reach Guesthouse
Prince Edward County, ON

State of Readiness

- Housing agencies
- Local government
- Waterfront Toronto
- Educational institutions
- Industry Associations
- Manufacturers
- Thousands of workforce, major firms

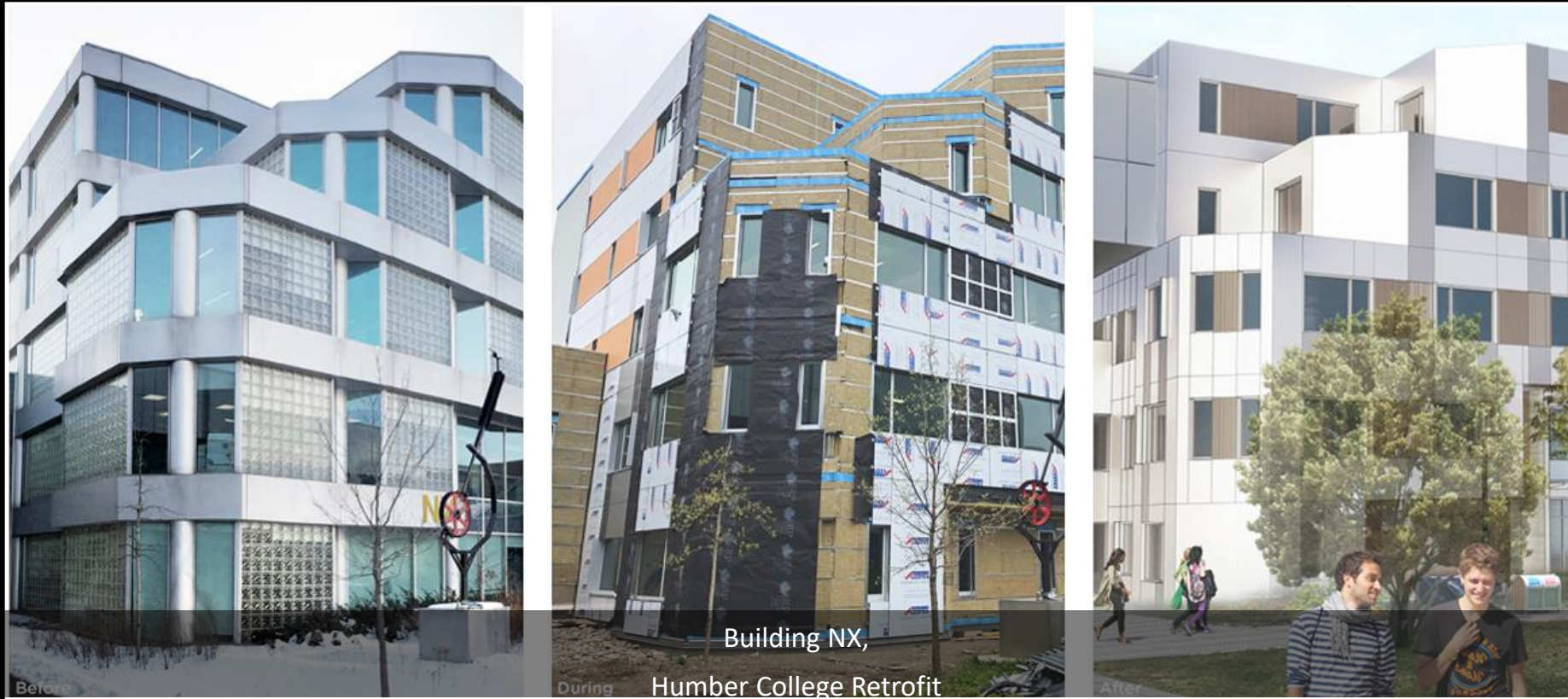
What is slowing transformation?

- LIMITED MARKET



Blossom Park, affordable housing
Oxford County

Public Sector Leadership?



Support of local government?



Ken Sobel Tower,
Hamilton, ON

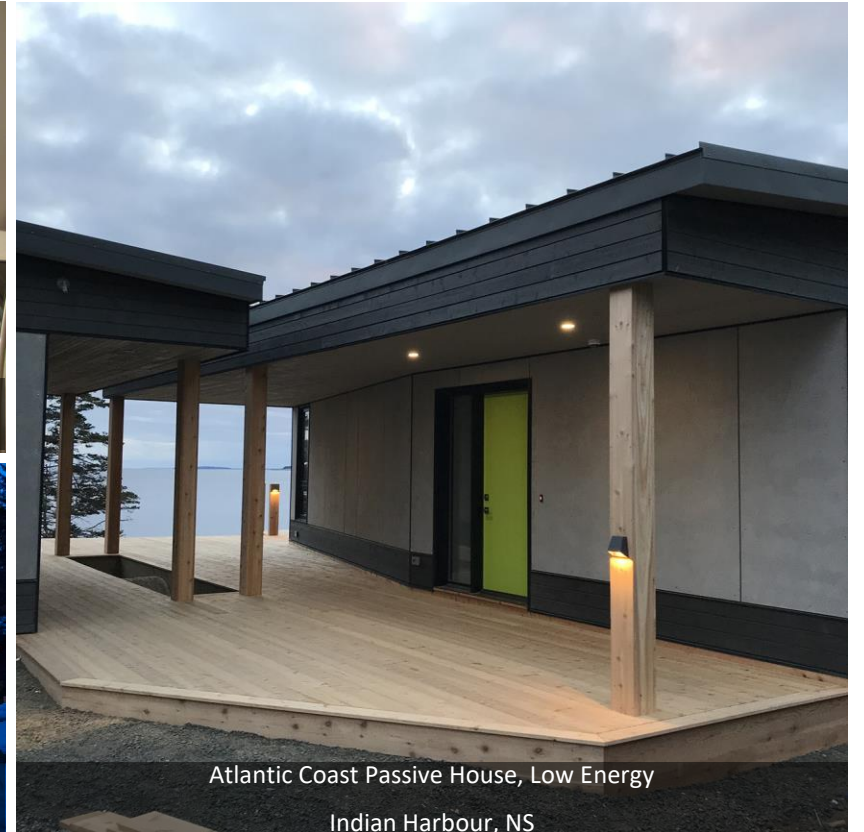
Feedback & Questions



Chelsea Passive House, PQ



Alta Lake Passive House, Whistler, BC



Atlantic Coast Passive House, Low Energy
Indian Harbour, NS