



# Sustainable Smart Cities

Maciej (Mike) Podoski, Technical Solutions Architect  
mpodoski@cisco.com

March 26<sup>th</sup>, 2020



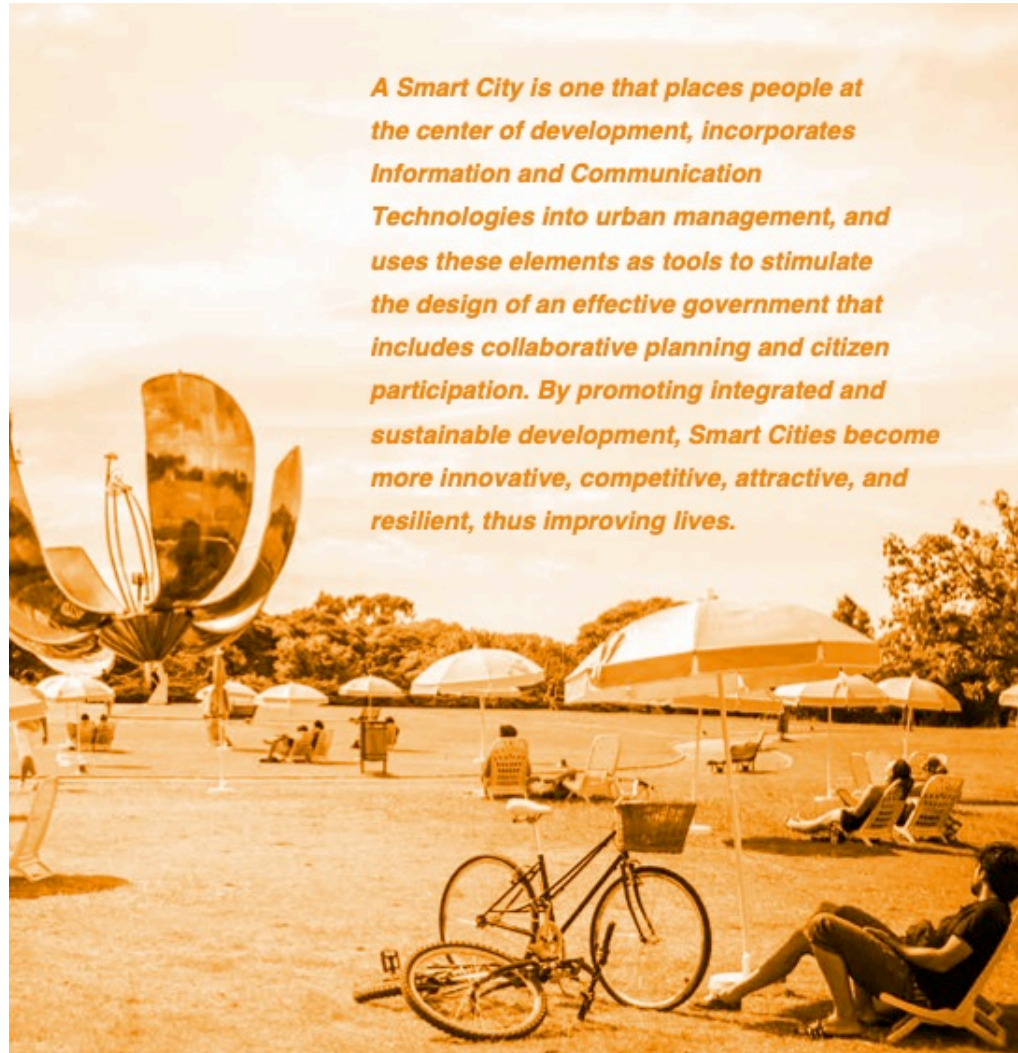
# sustainable [ suh-stey-nuh-buh l ]

*adjective*

- 1 capable of being supported or upheld, as by having its weight borne from below.
- 2 pertaining to a system that maintains its own viability by using techniques that allow for continual reuse:  
*sustainable agriculture. Aquaculture is a sustainable alternative to overfishing.*
- 3 able to be maintained or kept going, as an action or process:  
*a sustainable negotiation between the two countries.*
- 4 able to be confirmed or upheld:  
*a sustainable decision.*
- 5 able to be supported as with the basic necessities or sufficient funds:  
*a sustainable life.*

<https://www.dictionary.com/browse/sustainable>

# Smart City



**Source:**  
Inter-American Development Bank  
[www.iadb.org/SmartCities](http://www.iadb.org/SmartCities)

# The Future of the Internet

## Global Metrics

By 2023...

- 01 Internet Users  
There will be 5.3 billion Internet users (66% of global population)
- 02 Devices/Connections  
There will be 29.3 billion network connections (3.6 connections per capita)
- 03 Internet of Things (IoT)  
There will be 14.7 billion M2M connections (50% of all devices/connections)
- 04 Fixed Broadband Speeds  
Average fixed broadband speed will more than double, reaching 110 Mbps
- 05 Wi-Fi Speeds  
Average Wi-Fi speeds will triple, reaching 92 Mbps
- 06 Mobile (Cellular) Speeds  
Average mobile speeds will more than triple, reaching 44 Mbps
- 07 5G Impact  
5G speed will be 13X faster than average mobile speed, reaching 575 Mbps

<https://www.cisco.com/c/en/us/solutions/collateral/executive-perspectives/annual-internet-report/white-paper-c11-741490.html>



### Connected Home



- Home automation
- Building security
- Network equipment – printers + routers +
- Network infrastructure – routers +
- White goods
- Tracking applications
- Household information devices

### Connected Work



- Office building automation
- Building security
- Office equipment – printers +
- Routers +
- Commercial appliances

### Connected Car



- Fleet management
- In-vehicle entertainment systems, emergency calling, Internet
- Vehicle diagnostics, navigation
- Stolen vehicle recovery
- Lease, rental, insurance management

### Connected Health



- Health monitors
- Assisted living – medicine dispensers +
- Clinical trials
- First responder connectivity
- Telemedicine

### Connected Cities



- Environment and public safety – closed-circuit TV, street lighting, waste removal, information +
- Public space advertising
- Public transport
- Road traffic management

### Retail



- Retail goods monitoring and payment
- Retail venue access and control
- Slot machines, vending machines

### Manufacturing and Supply Chain



- Mining and extraction
- Manufacturing and processing
- Supply chain
- Warehousing and storage

### Energy



- New energy sources – monitoring and power generation support apps
- Smart grid and distribution
- Micro-generation– generation of power, by residential, commercial and community users on their own property

### Other



- Agriculture – livestock, soil monitoring, water and resource conservation, temperature control for milk tanks +
- Construction: Site and equipment monitoring
- Emergency services and national security

# Changing the Way We **Work**

## Self-Driving Vehicles



## Drone-Delivered Medicine Services



## Smart Waste



# Changing the Way We **Live**

## Egg Minder & Alerter



## Nest Cam for Dogs & Remote Dog-Treat Dispenser



## Wireless Diapers

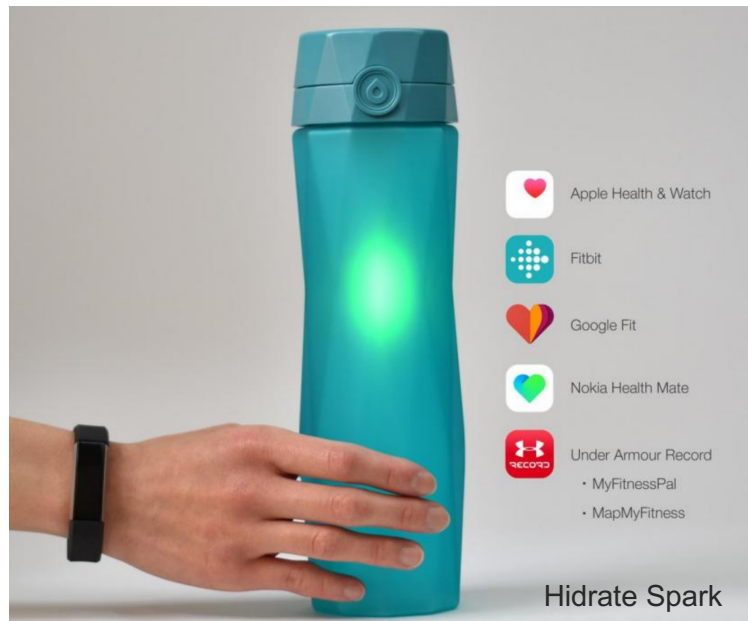


## Hotel Bed-Bug Catcher & Alerter



# Changing the Way We **Play**

## Smart Water Bottles



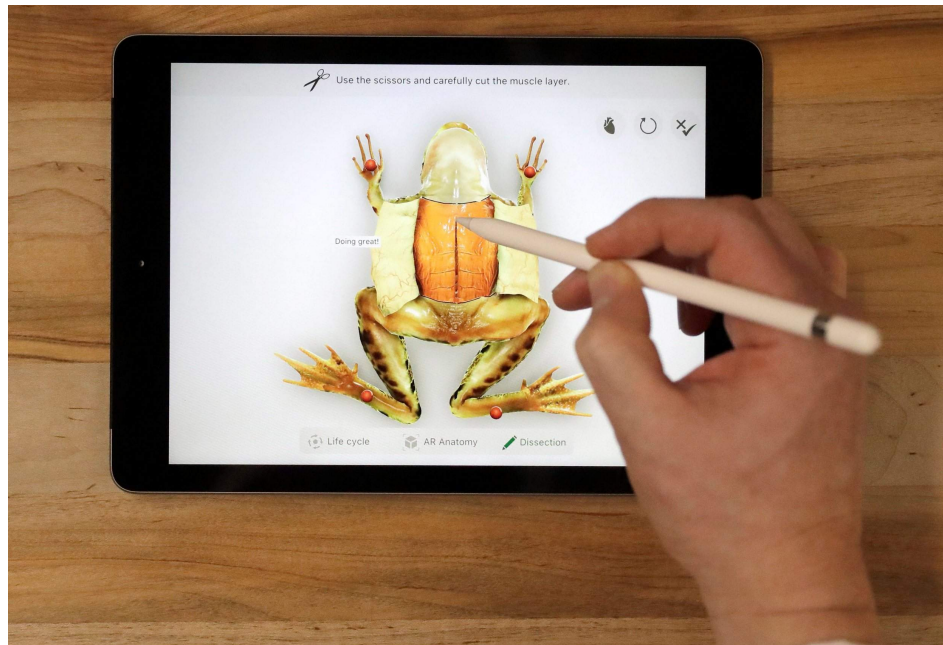
## Sports





# Changing the Way We **Learn**

## Smart Schools and Classrooms



## Disability Accommodation





To be smart and sustainable, it must be secure,  
right?

So how secure are we?

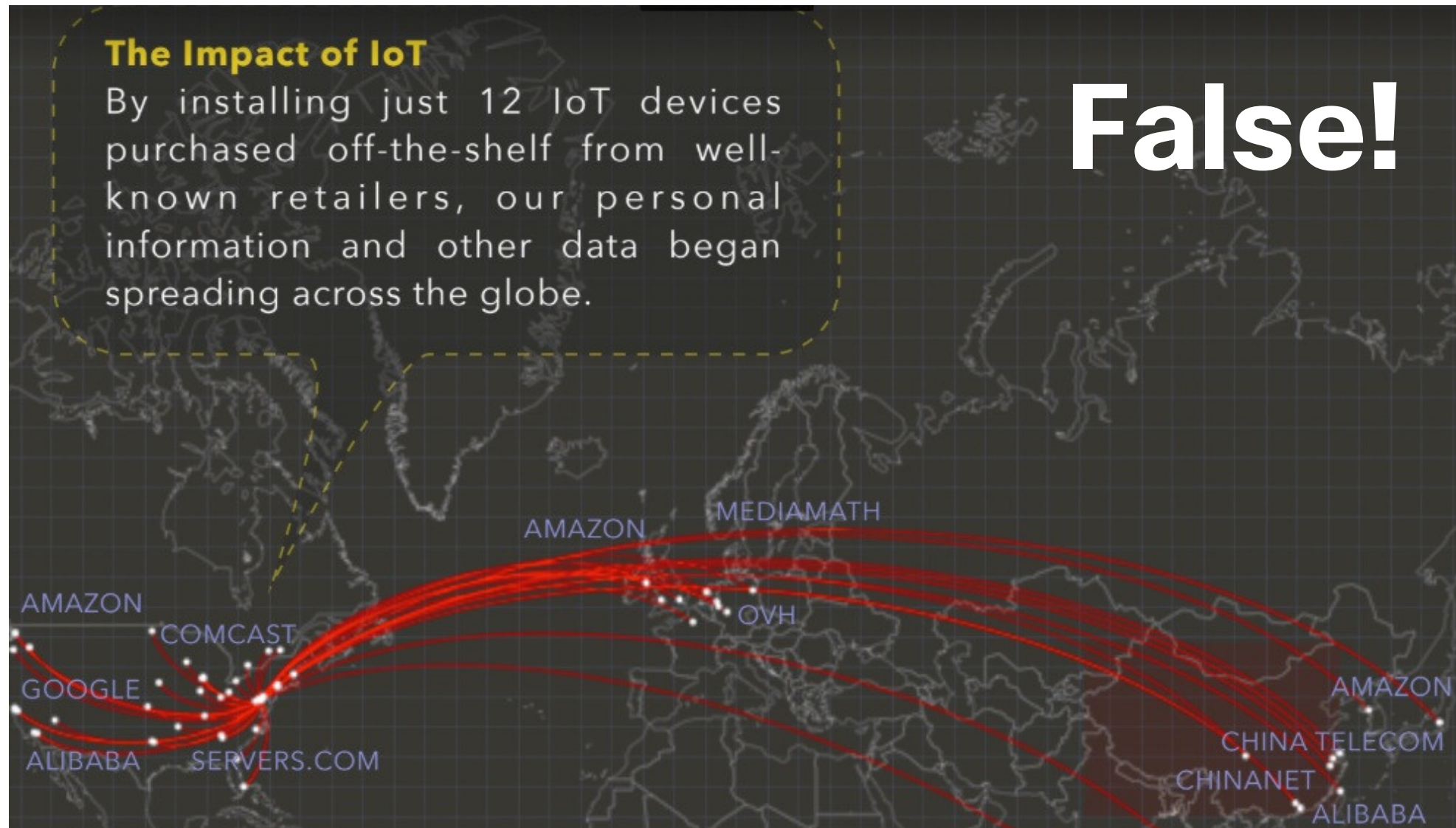


# Consumer IoT devices care about your privacy

True  
or  
False  
?



# Consumer IoT devices care about your privacy



<https://venturebeat.com/2019/01/29/pepper-iot-smart-devices-arent-so-bright-when-it-comes-to-security/>



# Hackers can Freeze You

**True  
or  
False  
?**




# Hackers can Freeze You

Security

## Finns chilling as DDoS knocks out building control system

Hint: next time, buy a firewall *before* you're attacked

By Richard Chirgwin 9 Nov 2016 at 03:30

17  SHARE ▼

# True!



Residents in two apartment buildings in the Finnish town of Lappeenranta had a chill-out lasting more than a week after a DDoS attack battered unprotected building management systems.

[https://www.theregister.co.uk/2016/11/09/finns\\_chilling\\_as\\_ddos\\_knocks\\_out\\_building\\_control\\_system/](https://www.theregister.co.uk/2016/11/09/finns_chilling_as_ddos_knocks_out_building_control_system/)

# Hackers can Halt Your Operations

**True  
or  
False  
?**





# Hackers can Halt Your Operations

**True!**

## **Norsk Hydro disrupted by major cyber attack**

⚡ 19th March 2019 - Author: [Charlie Wood](#)

A potential ransomware attack on Norsk Hydro, one of the world's largest manufacturers of aluminium, has forced the company to switch to manual operations in a bid to contain the breach.

Emerging reports indicate the Norway-based company's operations are being disrupted after unusual activity was spotted on its server by IT experts. It's understood that the attack disabled a key part of the company's smelting operations.

The firm's Chief Financial Officer Eivind Kallevik explained during a conference call that it does have cyber insurance in-force, however at this time it's not known how extensive the coverage is and how any claims would deal with cyber related business interruption.



<https://www.reinsurancene.ws/norsk-hydro-disrupted-by-major-cyber-attack/>



# Your Car Can be Hacked

**True  
or  
False  
?**



# Your Car Can be Hacked and Remotely-Controlled



**True!**

<https://www.kaspersky.com/blog/remote-car-hack/9395/>





So we, and our Cities, are going to get even more connected, but how can we do it securely, and... sustainably?

# Step 1 - Low Power Network Devices



100 Watts

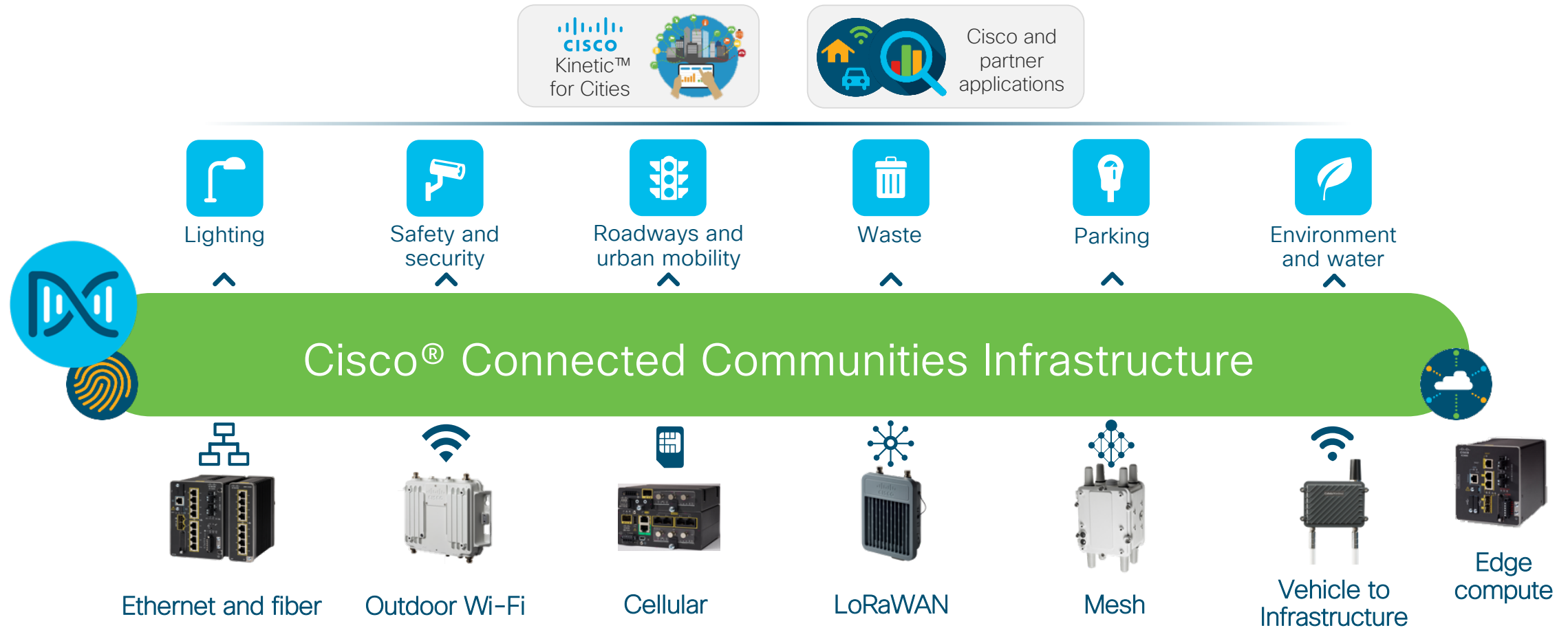


10 Watts

# Step 2 - Low Power Protocols for IoT Devices!



# Step 3 – Modular architectures





# Step 4 – Data insights

**DASHBOARD**  
Dashboard of the COVID-19 Virus Outbreak in Singapore 📅 21 JANUARY 2020 TO TODAY

**CONFIRMED CASES**  
**200** 11 in ICU

**Number Of Cases**  
21 Jan 2020 to Today

**Nationality**

- Singaporean
- Chinese
- Filipino
- Indonesian
- Malaysian
- Bangladeshi
- Japanese
- Italian
- British
- American
- Indian
- French
- Myanmarian

**Age and Gender Distribution**

**Source**

**Clusters**

**CASES / NUMBER 200**

**Case 200: 62-year-old female Singapore Citizen**

|                         |                  |                              |                         |                               |                       |
|-------------------------|------------------|------------------------------|-------------------------|-------------------------------|-----------------------|
| <b>GENDER</b><br>Female | <b>AGE</b><br>62 | <b>STATUS</b><br>In hospital | <b>SYMPTOMATIC</b><br>- | <b>CONFIRMED</b><br>13 Mar 20 | <b>RECOVERED</b><br>- |
|-------------------------|------------------|------------------------------|-------------------------|-------------------------------|-----------------------|

**Details**

Case 200 is a 62-year-old female Singapore Citizen who has no recent travel history to affected countries and regions. She was confirmed to have COVID-19 infection on 13 March morning and is currently warded in an isolation room at NCID. She is a family member of Case 165.

**Relationships**

*MOH has not reported any known links yet*

**Sources**

- <https://www.moh.gov.sg/news-highlights/details/one-more-case-discharged-thirteen-new-cases-of-covid-19-infection-confirmed-13Mar>

**CLUSTERS**

- Yong Thai Hang (Lave
- Grand Hyatt Hotel
- The Life Church and M
- Seletar Aerospace Hei
- Grace Assembly of Go
- Wizlearn Technologies
- Private dinner function

<https://co.vid19.sg/>

# Step 5 – Data driven use case

## Coronavirus: Ontario transport agency shares user data with public health body

- Ontario's public transport agency Metrolinx said last week that, on request, it gave Toronto Public Health contact information associated with registered Presto payments cards used on specific trips, after a 40-year-old man was diagnosed with coronavirus (COVID-19).
- The data related to specific MiWay and GO trips taken between March 2 and 4.
- The case is one of a growing number which highlight how officials are faced with ***finding the balance between long-term individual privacy and the common good*** amid an urgent public health crisis.



<https://www.smartcitiesworld.net/news/news/coronavirus-ontario-transport-agency-shares-user-data-with-public-health-body-5120>

17 March 2020: Sarah Wray: Editor, SmartCitiesWorld

# In conclusion

- Smart Cities must have people at the centre
- Cities will get increasingly connected, in more ways that we can imagine
- Bad actors will try to exploit any weakness in the infrastructure
- Technology is evolving, allowing sustainable connectivity and collection of data
- Data privacy is taking center stage
- We're only at the beginning of how data will lead to a sustainable city



You make **possible**

**Sustainable Smart City**